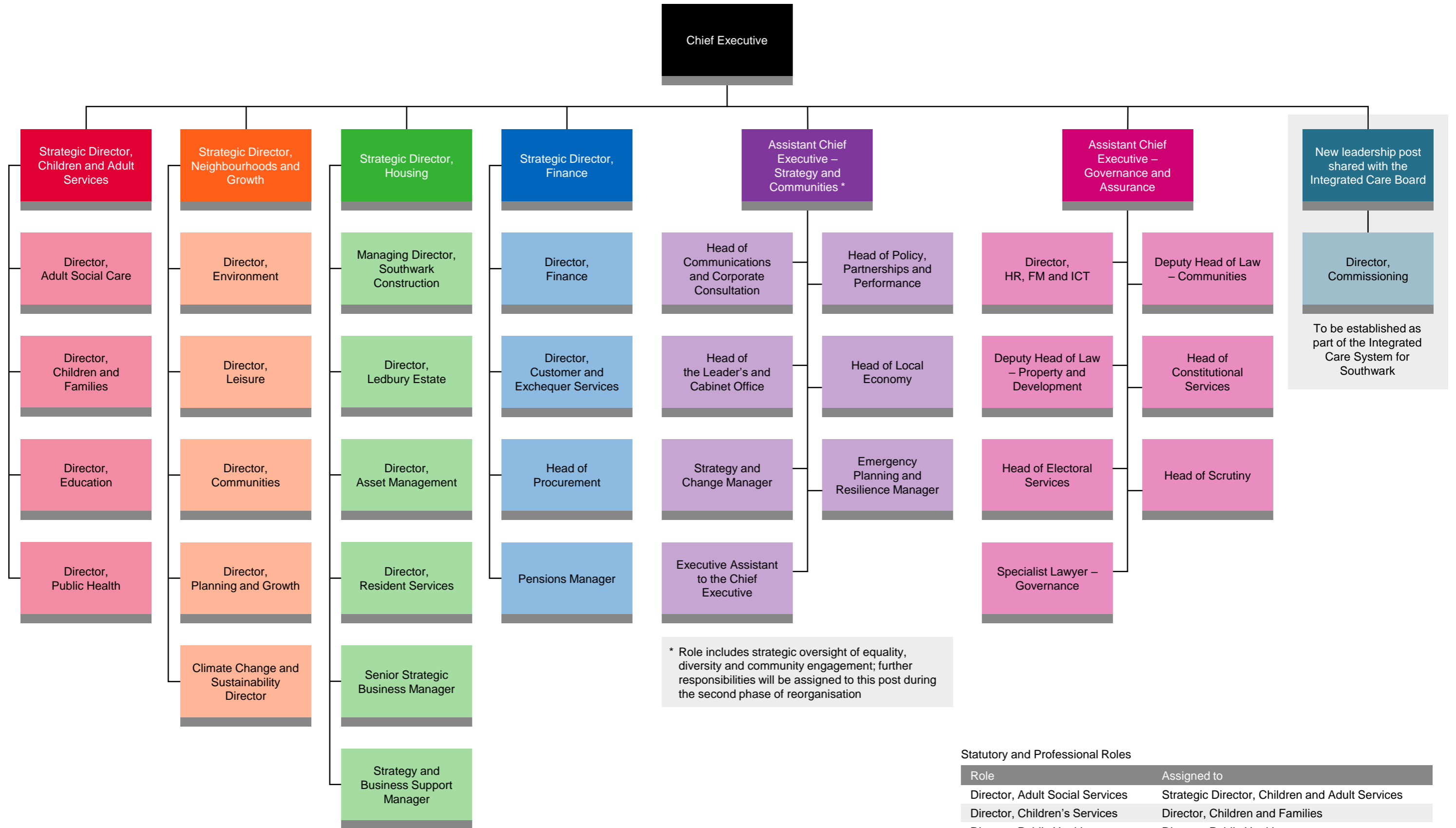


PROPOSED SENIOR MANAGEMENT STRUCTURE



* Role includes strategic oversight of equality, diversity and community engagement; further responsibilities will be assigned to this post during the second phase of reorganisation

Note: This structure is currently subject to consultation with employees and trade union representatives.

Statutory and Professional Roles	
Role	Assigned to
Director, Adult Social Services	Strategic Director, Children and Adult Services
Director, Children's Services	Director, Children and Families
Director, Public Health	Director, Public Health
Director, Human Resources	Director, HR, FM and ICT
Data Protection Officer	Assistant Chief Executive – Governance
Monitoring Officer	Assistant Chief Executive – Governance
Returning Officer	Chief Executive
Section 151 Officer	Strategic Director, Finance